

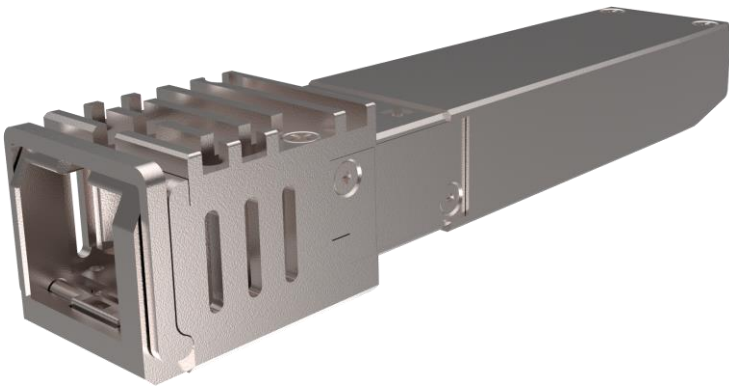
# Huawei OptiXstar S800E Datasheet

XGS-PON SFP ONU

Date: 2020-06-01

## Product Overview

The OptiXstar S800E is a miniature XGS-PON SFP ONU device that can be inserted into the SFP port of a camera or AP device to provide XGS-PON access for the device to meet the requirements of video backhaul or wireless backhaul.



## Product Highlights

- High bandwidth, support XGS-PON access.
- Small size and light weight, suitable for installation on camera or AP equipment.
- Supports  $-40^{\circ}\text{C}$  to  $+85^{\circ}\text{C}$  (Shell temperature) wide temperature range with strong environment adaptability.
- High reliability, type B dual-homing service protection, 50ms switching time.
- High security, support secure boot.

## Technical Specifications

<b>Dimensions</b>	65mm x 13.6mm x 12.6mm	<b>System power supply</b>	3.3 V
<b>Weight</b>	About 20 g	<b>NNI</b>	XGS-PON
<b>Operating</b>	$-40^{\circ}\text{C}$ to $+85^{\circ}\text{C}$ (Shell temperature)	<b>UNI</b>	GE/2.5GE/5GE/10GE interface adaptive

<b>temperature</b>			
<b>Operating humidity</b>	5%RH to 95%RH (non-condensing)	<b>Maximum power consumption</b>	2 W

## Port Parameters

<b>NNI</b>	<b>UNI</b>
<ul style="list-style-type: none"> <li>• Port type: SC/APC</li> <li>• Standard compliance: ITU-T G.9807</li> <li>• Maximum transmission distance: 20 km</li> <li>• Receiver sensitivity: <math>\leq -28</math>dBm</li> <li>• Overload optical power: <math>\geq -9</math>dBm</li> <li>• TX optical power: 4dBm to 9dBm</li> <li>• Extinction ratio (ER): <math>\geq 6</math>dB</li> <li>• Transmission rate: RX: 9.953 Gbit/s; TX: 9.953 Gbit/s</li> <li>• TX wavelength range: 1260 nm to 1280 nm(Center wavelength:1270 nm)</li> <li>• RX wavelength range: 1575 nm to 1580 nm(Center wavelength:1577 nm)</li> </ul>	<ul style="list-style-type: none"> <li>• GE/2.5GE/5GE/10GE interface adaptive</li> </ul>

## Function List


<b>Smart O&amp;M</b>	<b>Multicast</b>	<b>QoS</b>
<ul style="list-style-type: none"> <li>• Variable-length OMCI messages</li> <li>• Rogue ONT detection and isolation from the OLT</li> <li>• PPPoE/DHCP simulation testing</li> </ul>	<ul style="list-style-type: none"> <li>• IGMP v2/v3 snooping</li> <li>• MLD v1/v2 snooping</li> <li>• Fast leave</li> <li>• VLAN tag translation, transparent transmission, and removal for downstream multicast packets</li> <li>• IGMP/MLD protocol packet rate limitation</li> </ul>	<ul style="list-style-type: none"> <li>• Ethernet port rate limitation</li> <li>• 802.1p priority</li> <li>• SP/WRR/SP+WRR</li> <li>• Broadcast packet rate limitation</li> <li>• Flow mapping based on the VLAN ID, port ID, or/and 802.1p</li> </ul>
<b>Common O&amp;M</b>	<b>Security</b>	
<ul style="list-style-type: none"> <li>• OMCI</li> <li>• Dual-system software backup and rollback</li> <li>• 802.1ag Ethernet OAM</li> <li>• Optical link measurement and diagnosis</li> </ul>	<ul style="list-style-type: none"> <li>• MAC address filtering</li> </ul>	

---

**Copyright © Huawei Technologies Co., Ltd. 2020. All rights reserved.**

No part of this document may be reproduced or transmitted in any form or by any means without prior written consent of Huawei Technologies Co., Ltd.

**Trademarks and Permissions**

 HUAWEI and other Huawei trademarks are trademarks of Huawei Technologies Co., Ltd.

All other trademarks and trade names mentioned in this document are the property of their respective holders.

**Notice**

The purchased products, services and features are stipulated by the contract made between Huawei and the customer. All or part of the products, services and features described in this document may not be within the purchase scope or the usage scope. Unless otherwise specified in the contract, all statements, information, and recommendations in this document are provided "AS IS" without warranties, guarantees or representations of any kind, either express or implied.

The information in this document is subject to change without notice. Every effort has been made in the preparation of this document to ensure accuracy of the contents, but all statements, information, and recommendations in this document do not constitute a warranty of any kind, express or implied.

**Huawei Technologies Co., Ltd.**

Address:Huawei Industrial Base Bantian,  
Longgang Shenzhen 518129 People's  
Republic of China

Website:www.huawei.com