

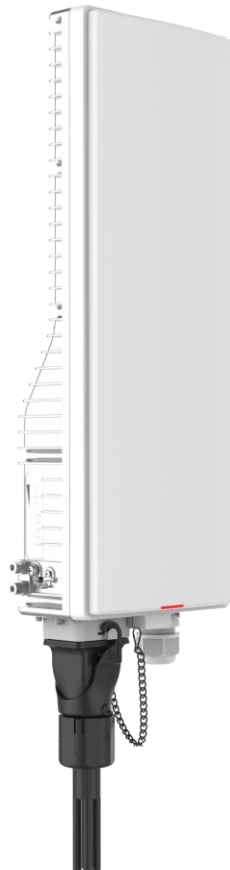
Huawei OptiXstar T620W Series Datasheet

Wi-Fi Video Backhaul Access Point

Date: 2021-04-20

Product Overview

Huawei OptiXstar T620W series pole-mounted APs for enterprise campuses include the T620W-45 (with a built-in 45° horizontal beamwidth antenna) and the T620W-90 (with a built-in 90° horizontal beamwidth antenna). They provide one GPON/GE optical port and one GE port on the network side, one GE port and 5G Wi-Fi function on the user side to support HD video backhaul services.



Product Highlights

- Anti-interference: industry-leading high-power air interface technology with excellent anti-interference.
- High reliability: protected to IP65 against water and dust, type-B dual homing service protection.

- High security: dedicated access authentication to prevent unauthorized access.
- Wide temperature range: -40° C to +60° C, strong environment adaptability.
- Multi-level cascading: 8-level cascading without throughput deterioration.
- Easy maintenance: one-click configuration, unified management and configuration of cameras and networks, visualized topology, and fast fault demarcation.

Technical Specifications

Dimensions	470mm x 167mm x 96mm(Without socket and other accessories)	Static power consumption	9 W
Weight	About 3 kg	NNI	GPON/GE(optical) + GE
Operating temperature	-40°C to +60°C	UNI	1GE+5G Wi-Fi
Operating humidity	5%RH to 95%RH (non-condensing)	Surge protection specifications	GE: common mode 6kV, differential mode 1.5kV. AC power: common mode 6kV, differential mode 6kV.
Power adapter input	100V to 240V AC, 50/60Hz	Protection level	IP65
System power supply	12V, 2A	Installation mode	Outdoor pole installation
Maximum power consumption	10 W	Antenna	T620W-45: Gain: 18±1 dBi Antenna angle: 45 degrees T620W-90: Gain: 15±1 dBi Antenna angle: 90 degrees

Port Parameters

GPON (SFP)	GE port	WLAN
<ul style="list-style-type: none"> • GPON SFP; • Standard compliance: ITU-T G.984.2, Class B+; • Receiver sensitivity: -27dBm to -29dBm; • Overload optical power: -8 dBm; • Transmission rate: RX: 2.488 Gbit/s; TX: 1.244 Gbit/s; • Type B single-homing; • Type B dual-homing (supported in Layer 2 forwarding). 	<ul style="list-style-type: none"> • Port type:RJ-45 • GE ports: Auto ports speed(10/100/1000 Mbit/s) • Auto-MDI/MDIX • Configuration of the number of MAC addresses learned • VLAN transparent transmission/VLAN filtering 	<ul style="list-style-type: none"> • IEEE 802.11 a/n/ac(5G) • 2 x 2 MIMO(5G)


Function List

Network management	Smart O&M	Multicast	Security
<ul style="list-style-type: none"> iClient network management system 	<ul style="list-style-type: none"> Rogue ONT detection and isolation from the OLT PPPoE/DHCP simulation testing 	<ul style="list-style-type: none"> Default/Static/Policy/Service routes VLAN binding ALG/UPnP/ARP DDNS/DMZ/DNS/NAPT PPPoE/Static IP/DHCP Port mapping/Port trigger IPv6 	<ul style="list-style-type: none"> Safe boot IPv6/IPv4 firewalls Filtering based on MAC/IP/URL DoS/ARP anti-attacks Static MAC address binding Device access control Web session number restriction
Multicast	QoS	Layer 2 Management	
<ul style="list-style-type: none"> IGMP v2/v3 snooping Dynamic controllable multicast IGMP proxy MLDv1/MLDv2 snooping 	<ul style="list-style-type: none"> Ethernet port rate limitation 802.1p priority SP/WRR/SP+WRR 	<ul style="list-style-type: none"> DHCP Option82 PITP BPDU transparent transmission LLDP/LLDP-MED 	

Copyright © Huawei Technologies Co., Ltd. 2021. All rights reserved.

No part of this document may be reproduced or transmitted in any form or by any means without prior written consent of Huawei Technologies Co., Ltd.

Trademarks and Permissions

 HUAWEI and other Huawei trademarks are trademarks of Huawei Technologies Co., Ltd.

All other trademarks and trade names mentioned in this document are the property of their respective holders.

Notice

The purchased products, services and features are stipulated by the contract made between Huawei and the customer. All or part of the products, services and features described in this document may not be within the purchase scope or the usage scope. Unless otherwise specified in the contract, all statements, information, and recommendations in this document are provided "AS IS" without warranties, guarantees or representations of any kind, either express or implied.

The information in this document is subject to change without notice. Every effort has been made in the preparation of this document to ensure accuracy of the contents, but all statements, information, and recommendations in this document do not constitute a warranty of any kind, express or implied.

Huawei Technologies Co., Ltd.

Address: Huawei Industrial Base Bantian,
Longgang Shenzhen 518129 People's
Republic of China

Website: www.huawei.com